



**Application for Permanent Spacing Unit  
Application for Compulsory Pooling**

**Taylor 14-23 #2H, #3H, #4H & #5H  
All of Sections 14 & 23 - T25N - R58E  
Richland County, Montana**

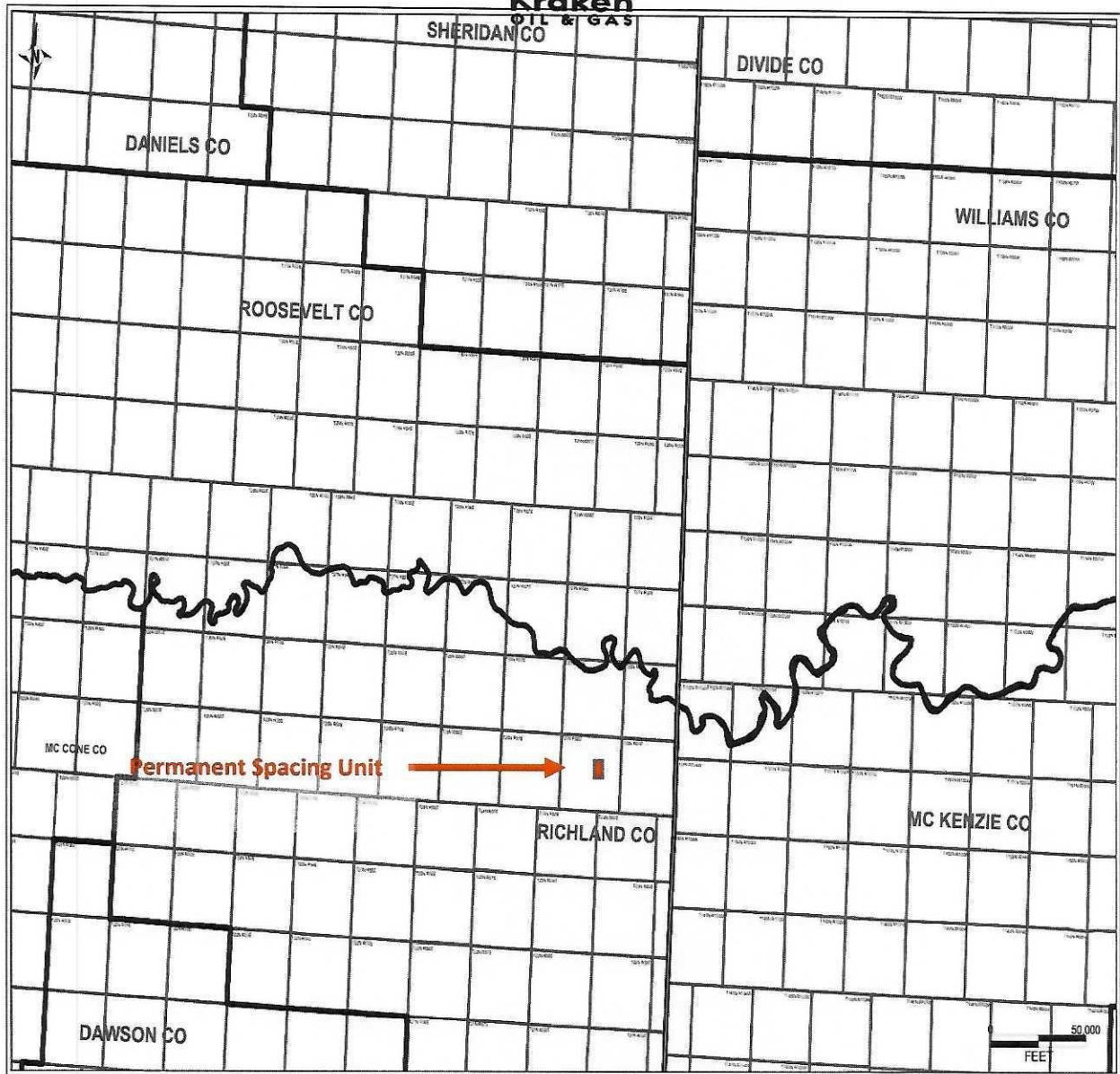
**Department of Natural Resources  
And Conservation  
Board of Oil & Gas Conservation  
Of the State of Montana  
Docket No. 9-2021 & Docket No. 10-2021  
April 8th, 2021**



**Docket No. 9-2021 & Docket No. 10-2021**

**TABLE OF CONTENTS**

<u>DESCRIPTION</u>	<u>EXHIBIT NO.</u>
Regional Location Map	L-1
Tract Map	L-2 - L-3
Ownership Schedule	L-4 - L-5
Middle Bakken Reservoir Structure Map	G-1
Middle Bakken Reservoir Isopach Map	G-2
Type Log	G-3
Wellbore Diagram	E-1 - E-4
Well Plat	E-5 - E-7
Reserves and Economic Analysis	E-8
Production Profile	E-9 - E12

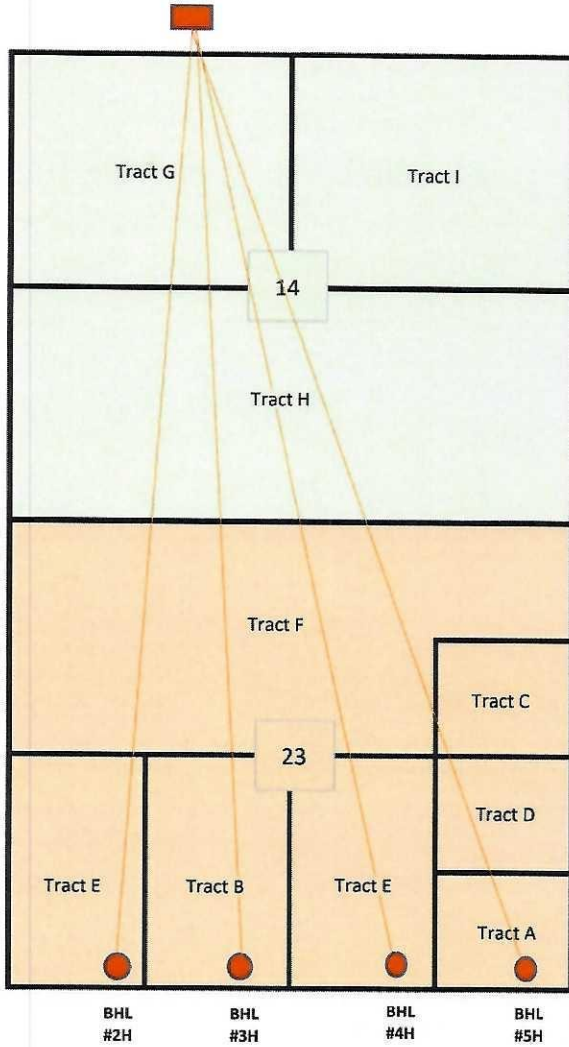


**Regional Locator Map**  
Permanent Spacing Unit  
T25N-R58E-Sections 14 & 23  
Richland County , Montana



T25N-R58E-14 & 23  
 Richland County, Montana

Surface Location



**Recapitulation**

Tract #	Acres	% in CA
Tract A (FEE)	40.00	3.13%
Tract B (FEE)	80.00	6.25%
Tract C (FEE)	40.00	3.13%
Tract D (FEE)	40.00	3.13%
Tract E (FEE)	160.00	12.50%
Tract F (FEE)	280.00	21.88%
Tract G (FEE)	160.00	12.50%
Tract H (FEE)	320.00	25.00%
Tract I (FEE)	160.00	12.50%
	<b>1280.00</b>	<b>100.00%</b>



**Working Interest Summary**

KRAKEN OIL & GAS LLC	58.9856%	EAST END ENERGY, INC.	0.3828%	JO ANN BROOKS	0.1194%
BASIN ACQUISITION FUND, LP	26.6932%	KENNETH J. KUNDRIK	0.0000%	JUDITH A. EGR	0.0456%
BASIN CO-INVESTMENT II, LP	0.1107%	KEY PRODUCTION CO., INC.	0.2866%	LARRY D. KERN	0.0651%
COBRA OIL & GAS CORPORATION	0.0738%	MARK GATOF	0.3177%	MAURINE JOHNSTON, TRUSTEE	0.0342%
CONTINENTAL RESOURCES, INC.	2.4043%	MARSHALL RESOURCES, LLC	0.00001%	PATRICK ELLIOTT	0.0944%
DAKOTA VENTURES I, LLC	0.0229%	PARAGON OIL & GAS LLC	0.0095%	PAULETTE P. KERN	0.0651%
EQUINOR ENERGY LP	2.5195%	RIM NOMINEE PARTNERSHIP	0.0023%	ROGER BORCHERT	0.0072%
GOLDLINE CREEK, LLC	0.0275%	Robert Lloyd Segal Trust	0.6354%	SANDRA C. CARTER	0.0405%
GRANDHAVEN ENERGY, LLC	0.1330%	TCG LIMITED PARTNERSHIP	1.1719%	SISTER SARAH JAMES	0.0087%
GUNLIKSON PETROLEUM, INC.	0.0043%	VESCO FAMILY LLLP	0.0003%	THE GREBE FAMILY TRUST	0.1215%
INLAND OIL & GAS CORPORATION	0.1128%	WENDY GATOF	0.0052%	VESTA, LP	0.1560%
LEFT COAST OIL & GAS LLC	0.2412%	WHITE ROCK OIL & GAS GP I, LLC	0.7980%	SUSANNE A. HOUSTON	0.0049%
KNAPP OIL CORPORATION	0.7400%	WHITE ROCK OIL & GAS PARTNERS II-B, LP	0.1395%	TINA THORSON	0.0043%
LEON & NORLEEN CONITZ	0.0260%	ANNE REED	0.0049%	W.W. FISHER	0.0488%
LYNX OIL COMPANY	0.0977%	ATROPOS EXPLORATION COMPANY	0.0352%	WANDA PETERSON	0.2170%
NIWOT RESOURCES, LLC	0.0033%	BRENDA TESKE	0.0054%	MICHAEL A. MORAN	0.0723%
POPLAR ENERGY COMPANY, LLC	0.0012%	BRIAN FISHER	0.0054%	MICHAEL F. CRAVEN	0.0017%
POSSE OPERATING, INC.	0.0651%	RICHARD CLARK	0.0651%	NORTHLAND SERVICES INC.	0.2604%
PRIMA EXPLORATION, INC.	0.0331%	BRYANT CLARK	0.0651%	PATRICIA SWENSON-GREEN	0.0260%
ROEC, INC.	0.0071%	DONNA M. SNYDER	0.0049%		100.0000%
RONALD KNIGHT	0.0781%	DOROTHY DITTMER LIVING TRUST	0.0244%		
SUNDHEIM OIL CORPORATION	0.4460%	ELLCO RESOURCES, LLC	0.1563%		
TRILOGY OIL AND GAS, LLC	0.2930%	FRED S. JENSEN	0.0195%		
TWIN CITY TECHNICAL LLC	0.0072%	JAMES A. MURI	0.0244%		
ARNOLD GREENBERG	0.2930%	JAMES E. STRAND	0.0065%		
BLACKBEAR OIL & GAS, LLC	0.00003%	JAMES P. BYRNE MINERAL TRUST	0.0087%		
BLACKLAND PETROLEUM, LLC	0.00002%	JAMES SMITH	0.0244%		
COW GULCH COMPANY	0.8789%	MELISSA MCLEOD	0.0564%		
DEE BENTLEY, INC.	0.00001%	MELVIN G. MAIER	0.0521%		

Non-Consent Working Interest  
Unleased Working Interest



Ownership Schedule  
T25N-R58E- Sections 14 & 23  
Richland County, Montana

Tract A (40.00 Acres)

**Mineral and Royalty Owners**

SS/GAE, LTD  
ATROPOS EXPLORATION COMPANY  
EDDIE JAMES PETERSON  
KATRINA HARRIS  
BRIAN DUANE BEECHER  
EIDET RESOURCES, LLC  
SUSAN STEARNS  
PAMELA D. HESTEKIN  
DONALD C. HESTEKIN  
JEANNE HARTERT FKA JEANNE BROOKS  
ROBERT POST JOHNSON  
ROGER N. BORCHERT  
TERRY L. HARRIS  
DUDLEY J. STUBER, TRUSTEE OF THE D.J. STUBER L MARK R. GADWAY  
CLUB OIL & GAS, LTD.  
RAYMOND T. DUNCAN OIL PROPERTIES, LTD.  
WALTER DUNCAN OIL  
RAYMOND T. DUNCAN OIL PROPERTIES, LTD.  
CLUB OIL & GAS, LTD.  
DONNA SPRAGUE  
CATHERINE LEE SUGIMURA  
DEBRA JEAN ROHNER  
JEFFREY CARL SKJOTHAUG  
GREGORY PHILLIP SKJOTHAUG  
KENNETH SKJOTHAUG  
JANET M. KONGSALA  
DONNA M. SPRAGUE  
ARTHUR SKJOTHAUG  
DWANE E. SKJOTHAUG  
DONALD J. SKJOTHAUG  
CAROL YADON  
CLUB OIL & GAS, LTD.  
RAYMOND T. DUNCAN OIL PROPERTIES, LTD.  
WALTER DUNCAN OIL  
ALFRED W. DOOLEY  
GERALDINE SCHIEFFER  
FLORENCE E. DOOLEY  
ANN MARIE ROHDE

Tract A (40.00 Acres Con't)

GERALD DOOLEY  
EILA WICK  
VONDA SELIGER  
JAMES L. STUBBS  
ROBERT H. STUBBS  
CHARLOTTE PAYETTE  
RUTH MARIE HOWARD  
ROBERT ENGEN  
EVELYN FALKENHAGEN  
HAROLD ENGEN  
MARY VOLLUM  
ELSIE LORENZ  
GEORGE AND ELISABETH HUNTER  
CASEY GADWAY  
ECM RESOURCES, INC.  
SANDRA K. ZARLINGO  
PATRICK L. BELCASTRO  
REED CO.  
BRIDGEPOINT MINERAL ACQUISITION FUND 2, LLC  
HAT CREEK ROYALTY LTD.  
TRI-STAR MINERALS  
H-S MINERALS AND REALTY, LTD.  
HILL INVESTMENTS, LTD.  
Manada Resources, LLC  
Debra L. Belcastro

Working Interest Owners

Kraken Oil & Gas, LLC  
Dakota Ventures I, LLC  
East End Energy, Inc.  
Donna M. Snyder  
Dorothy Dittmer Living Trust  
Anne Reed  
Fred S. Jensen  
Goldline Creek, LLC  
Grandhaven Energy, LLC  
James A. Muri  
James Smith  
KKREP, LLC  
Lynx Oil Company  
Mark Gatof  
Maurine Johnston Trust  
Monkota Petroleum Corp.  
Paragon Oil & Gas, LLC  
Poplar Energy Company, LLC  
Porovidence Minerals, LLC  
Evelyn R. Segal Trust  
ROEC, Inc.  
Segal Oil & Gas, Inc.  
W.W. Fisher  
Wendy Gatof  
White Rock Oil & Gas GP I, LLC  
White Rock Oil & Gas Partners I-B, LP



Ownership Schedule Cont'd  
T25N-R58E- Sections 14 & 23  
RichlandCounty, Montana

Tract B (80.00 Acres)

**Mineral and Royalty Owners**

Dale Williston Minerals 2012-8  
Dale/Peregrine Minerals Fund LP  
Dale/P Minerals Limited Partnership  
Brent J. Morse  
Myrna V. & Ross D. Peace  
Burtis W. & Anne Meyer Family Trust  
Rigs the Land Dog, LLC  
Kraken Oil & Gas, LLC  
J and R Hunter, LLC  
Virginia M. Davidson & Kincaid Davidson  
Family Tree Corp.  
Wesley Frank McGhee  
Diversified Rox Minerals, LLC  
BRD Royalty Holdings, LLC  
Kimbell Royalty Holdings, LLC  
Rivercrest Royalties II, LLC  
The Burnett Foundation  
KRP Bakken I, LLC  
RTM Minerals, LLC  
Lowry Energy Partners  
David Clark  
Kirby L. Dasinger

**Working Interest Owners**

David Clark  
Trilogy Oil and Gas, LLC  
Kraken Oil & Gas, LLC  
Brigham Oil & Gas, LP

Tract C (40.00 Acres)

**Mineral and Royalty Owners**

James P. Byren Mineral Trust  
James P. Craven  
Kathleen M. McClaskey  
Michael F. Craven  
Robert F. Craven, Jr.  
Theresa M. Parks  
Mary Louise Byrne  
Sister Sarah James  
Elizabeth Theresa Byrne  
Arlen J. Moran  
Michael A. Moran  
Tammy D. Dynneson  
Carla Rasmussen  
Christi Madsen  
Connie Smith  
Glen Vanderhoof  
Wanda Peterson  
B. Barton Fisher & Kay Fisher  
Blair Fisher  
Brenda Teske  
Brian Fisher  
Jerry A. Fisher  
Jo Anne Brooks  
Nadine Fisher  
James E. Strand  
Judith A. Egr  
Sandra K. Alto  
Scott D. Strand  
Ellico Resources, Inc.  
Kirby L. Dasinger  
Kaleb M. Dasinger  
Sundheim Oil Corp.  
Cindy M. Macaffree  
Edward L. Macaffree  
Kitty J. Songer  
Patricia L. Wilson  
Roger D. McCaffree  
Sandra C. Day  
The Grebe Family Trust  
Wanda A. Ruff

Mineral and Royalty Owners (Tract C Con't)

Ronald Knight  
Kathleen Doppler  
Gordon W. G. Kern & Kathryn Kern  
Glenn Sedlacek  
Helen Sedlacek  
Leon & Norleen Conitz  
Patricia Swenson-Green  
SS/GAE, LTD  
Atropos Exploratooin Company  
Chelsey Jo Jennings  
Inland Oil & Gas Corp.  
Melissa McLeod  
Glen E Paulsen  
Gayle Garner Roski Rev. Trust  
James E. & Cherron Munson Rev Trust  
Mary Anne Garner Fisone Rev Trust  
Tucker Garner O&G, LLC  
Joe M. Halvorsen Irrev. Trust  
**Working Interest Owners**  
Blackbear Oil & Gas, LLC  
Blackland Petroleum, LLC  
Continental Resources, Inc.  
Dee Bently, Inc.  
Ellico Resoureces, Inc.  
Gunlikson Petroleum, Inc.  
Kenneth J. Kundrik  
Key Production Co., Inc.  
Kraken Oil & Gas, LLC  
Marshall Resources, LLC  
NIWOT Resources, LLC  
Prima Exploration, Inc.  
Rim Nominee Partnership  
Sundheim Oil Corp.  
Vesco Family LLLP



Ownership Schedule Cont'd  
T25N-R58E- Sections 14 & 23  
RichlandCounty, Montana

**Tract D (40.00 Acres)**

**Mineral and Royalty Owners**

Michael A. Moran  
Tammy D. Dynneson  
Brenda Teske  
Brian Fisher  
Inland Oil & Gas Corp.  
Elizabeth T. Byrne  
Elco Resources, Inc.  
Gayle G. Roski  
Glen Vanderhoof  
Glenn Sedlacek  
Helen Sedlacek  
Gordon W.G. Kern & Kathryn Kern  
James E. Strand  
James P. Byrne Mineral Trust  
James P. Craven  
Jo Ann Brooks  
Joe M. Halvorsen Irrev. Trust  
Judtih A. Egr  
Kathleen M. McClaskey  
Kathleen S. Dopler  
Kitty J. Songer  
Knapp Oil Corp.  
Leon & Norleen Conitz  
Mary Louise Byrne  
Melissa McLeod  
Michael F. Craven  
Patricia L. Wilson  
Patricia Sweson-Green  
Ronald Knight  
Sandra C. Day  
Sister Sarah James  
SS/GAE, Ltd.  
Atropos Exploration Company  
Sundheim Oil Corp.  
The Grebe Family Trust  
Theresea Parks  
Wanda Peterson

**Tract D (40.00 Acres)**

**Working Interest**

Kraken Oil & Gas, LLC  
Michael A. Moran  
Tammy D. Dynneson  
Brenda Teske  
Brian Fisher  
Inland Oil & Gas Corp.  
Elizabeth T. Byrne  
Elco Resources, Inc.  
Gayle G. Roski  
Glen Vanderhoof  
Glenn Sedlacek  
Helen Sedlacek  
Gordon W.G. Kern & Kathryn Kern  
James E. Strand  
James P. Byrne Mineral Trust  
James P. Craven  
Jo Ann Brooks  
Joe M. Halvorsen Irrev. Trust  
Judtih A. Egr  
Kathleen M. McClaskey  
Kathleen S. Dopler  
Kitty J. Songer  
Knapp Oil Corp.  
Leon & Norleen Conitz  
Mary Louise Byrne  
Melissa McLeod  
Michael F. Craven  
Patricia L. Wilson  
Patricia Sweson-Green  
Ronald Knight  
Sandra C. Day  
Sister Sarah James  
SS/GAE, Ltd.  
Atropos Exploration Company  
Sundheim Oil Corp.  
The Grebe Family Trust  
Theresea Parks  
Wanda Peterson

**Tract E (160.00 Acres)**

**Mineral and Royalty Owners**

Dale Williston Minerals 2012-B  
Dale/Peregrine Minerals Fund LP  
Dale/P Minerals Limited Partnership  
Brent J. Morse  
Milo C. Hunter  
Sandra Iverson  
Morris Hunter  
Joe M. Halvorsen Irrev. Trust  
Rigs the Land Dog, LLC  
Kraken Oil & Gas, LLC  
Wesley Frank McGhee  
Elco Resources, Inc.  
Knapp Oil Corp.  
Sundheim Oil Corp.  
Kirby L. Dasinger

**Working Interest**

Kraken Oil & Gas, LLC  
Sundheim Oil Corp.  
Brigham Oil & Gas, LP  
KKREP, LLC

**Tract F (280.00 Acres)**

**Mineral and Royalty Owners**

Dale Williston Minerals 2012-B  
Dale/Peregrine Minerals Fund LP  
Dale/P Minerals Limited Partnership  
Brent J. Morse  
Milo C. Hunter  
Sandra Iverson  
Morris Hunter  
Steven Sheard  
Stuart Sheard  
Spencer Sheard  
Rigs the Land Dog, LLC  
Kraken Oil & Gas, LLC  
Wesley Frank McGhee  
Ida Halvorsen  
Lloyd C. Hage  
Gladys M. Sheard  
Eva H. Hage

**Working Interest**

Kraken Oil & Gas, LLC  
Brigham Oil & Gas, LP





Ownership Schedule Cont'd  
T25N-R58E- Sections 14 & 23  
RichlandCounty, Montana

**Tract F (280.00 Acres)**

**Mineral and Royalty Owners**

Dale Williston Minerals| 2012-B  
Dale/Peregrine Minerals Fund LP  
Dale/P Minerals Limited Partnership  
Brent J. Morse  
Milo C. Hunter  
Sandra Iverson  
Morris Hunter  
Steven Sheard  
Stuart Sheard  
Spencer Sheard  
Rigs the Land Dog, LLC  
Kraken Oil & Gas, LLC  
Wesley Frank McGhee  
Ida Halvorsen  
Lloyd C. Hage  
Glady's M. Sheard  
Eva H. Hage  
Kirby L. Dasinger  
**Working Interest**  
Kraken Oil & Gas, LLC  
Brigham Oil & Gas, LP

**Tract G (160.00 Acres)**

**Mineral and Royalty Owners**

Sandra K. Alto  
Scott D. Strand  
Peg E. Mayland  
Everest Energy, LLC  
Glen E. Paulsen  
Sheryl L. Cameron  
Lori Ann Reiss  
Christin L. Noyes  
Judy Englund  
Terry Anvik  
Michael Anvik  
Marlys Marie Anvik  
Sheri Johnson  
Randy Skov  
Laurie Bauman  
Jennie Horn  
Patti Fogle  
Vern Anvik  
Lisa Schmitz  
Dianne Brottem  
Maryann Heil Mabon  
Charlene Heil  
David Belakjon  
Roxanne & Vernon Pierce  
Edward L. McCaffree  
Roger D. McCaffree  
Brian Belakjon  
Kirstin Belakjon-Cayko  
Susan Stearns  
Pamela Hestekin  
Donald C. Hestekin  
Jeanne Hartert  
Brenda Teske  
Chelsey Jo Jennings  
Blair Fisher  
Brian Fisher  
Wanda A. Ruff  
Merrill C. Rivinius  
B. Barton Fisher & Kay Fisher  
Cindy McCaffree  
Marilyn S. Vanstralen

**Tract G (Con't)**

**Mineral and Royalty Owners**

Patricia L. Wilson  
Kitty J. Songer  
Dudley J. Stuber  
Stuber Land & Royalty  
Terry L. Harris  
Robert Post Johnson  
Sandra C. Carter  
James E. Strand  
Katherine Rae Lacy  
Connie Kae Collings  
Jerry A. Fisher  
Nadine Fisher  
The Grebe Family Trust  
Tina Thorson  
Inland Oil & Gas Corp.  
Jo Ann Brooks  
Judith A. Egr  
Knapp Oil Corp.  
Larry D. Kern  
Leon & Norleen Conitz  
Melissa McLeod  
Melving G. Maier  
Northland Services Inc.  
Patrica Swenson-Green  
Patrick Elliott  
Paulette P. Kern  
Roger Borchert  
Ronald Knight  
Sundheim Oil Corp.  
Valerie Dawn Webb  
**Working Interest**  
Kraken Oil & Gas, LLC  
Basin Acquisition Fund, LP  
Basin Co-Investment II, LP  
Brigham Oil & Gas LP  
Cobra Oil & Gas Corp.  
Sundheim Oil Corp.  
Knapp Oil Corp.  
Inland Oil & Gas Corp.



Ownership Schedule Cont'd  
T25N-R58E- Sections 14 & 23  
RichlandCounty, Montana

**Tract H (320.00 Acres)**

**Mineral and Royalty Owners**

Artuhur & Gertrude Paul  
Everest Energy, LLC  
B. Barton Fisher & Kay Fisher  
Blair Fisher  
Brenda Teske  
Brian Fisher  
Charles J. Petereson Trust  
Cindy McCaffree  
Edward McCaffree  
Roxanne Pierce  
David Belakjon  
Brian Belakjon  
Kirstin Belakjon-Cayko  
Tina Thorson  
Vernon Pierce  
Elliott Oil Corp.  
Glen E. Paulson  
Glen R. Bruhschwein  
Gordon W. Schnell  
James E. Strand  
Jerry A. Fisher  
Jo Ann Brooks  
John & Louise Sherman  
Judith Egr  
Judy Englund  
Kirby L. Dasinger  
Kitty J. Songer  
Larry D. Kern  
Marilyn Vanstralen  
Michael C. Waller  
Milo C. Hunter  
Morris Hunter  
Nadine Fisher  
Nesthakchen LLLP  
Patricia L. Wilson  
Apaulette P. Kern  
Randall N. Sickler Family Trust  
Roger D. McCaffree  
Ronald Knight  
Sandra C. Day  
Sandra Iverson

Sandra K. Alto  
Scott D. Strand  
Sharyl Maier  
Sundheim Oil Corp.  
The Grebe Family Trust  
Timothy A. Priebe  
Wanda Ruff  
Florida Exploration Company  
Sonora Petroleum Corp.  
**Working Interest**  
Segal Oil & Gas, Inc.  
Kraken Oil & Gas, LLC  
Cow Gulch Oil Company  
East End Energy, Inc.  
Basin Acquisition Fund, LP  
Mark Gatof  
Monkota Petroleum Cop.  
Robert Lloyd Segal  
TCG Limited Partnership

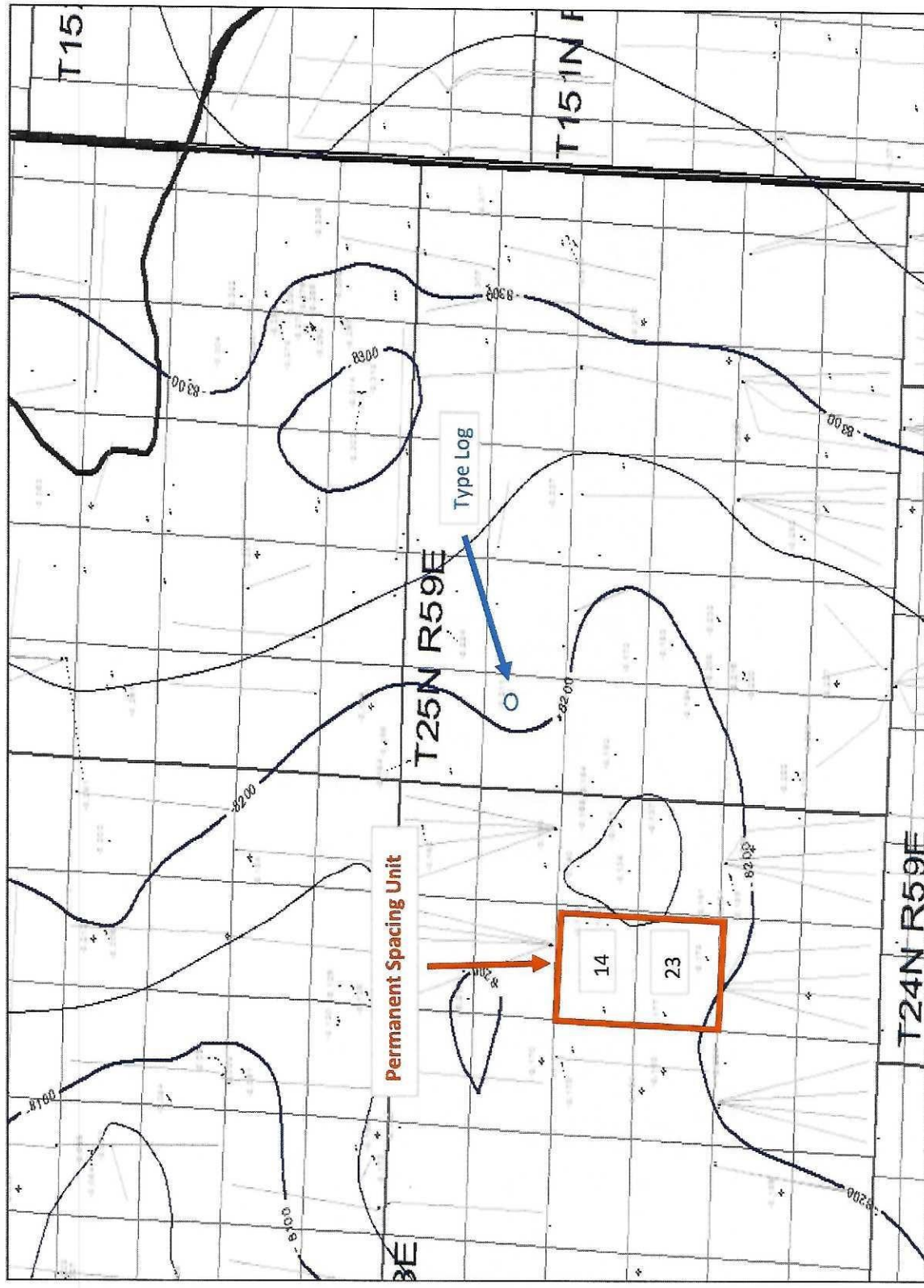
**Tract I (160.00 Acres)**

**Mineral and Royalty Owners**

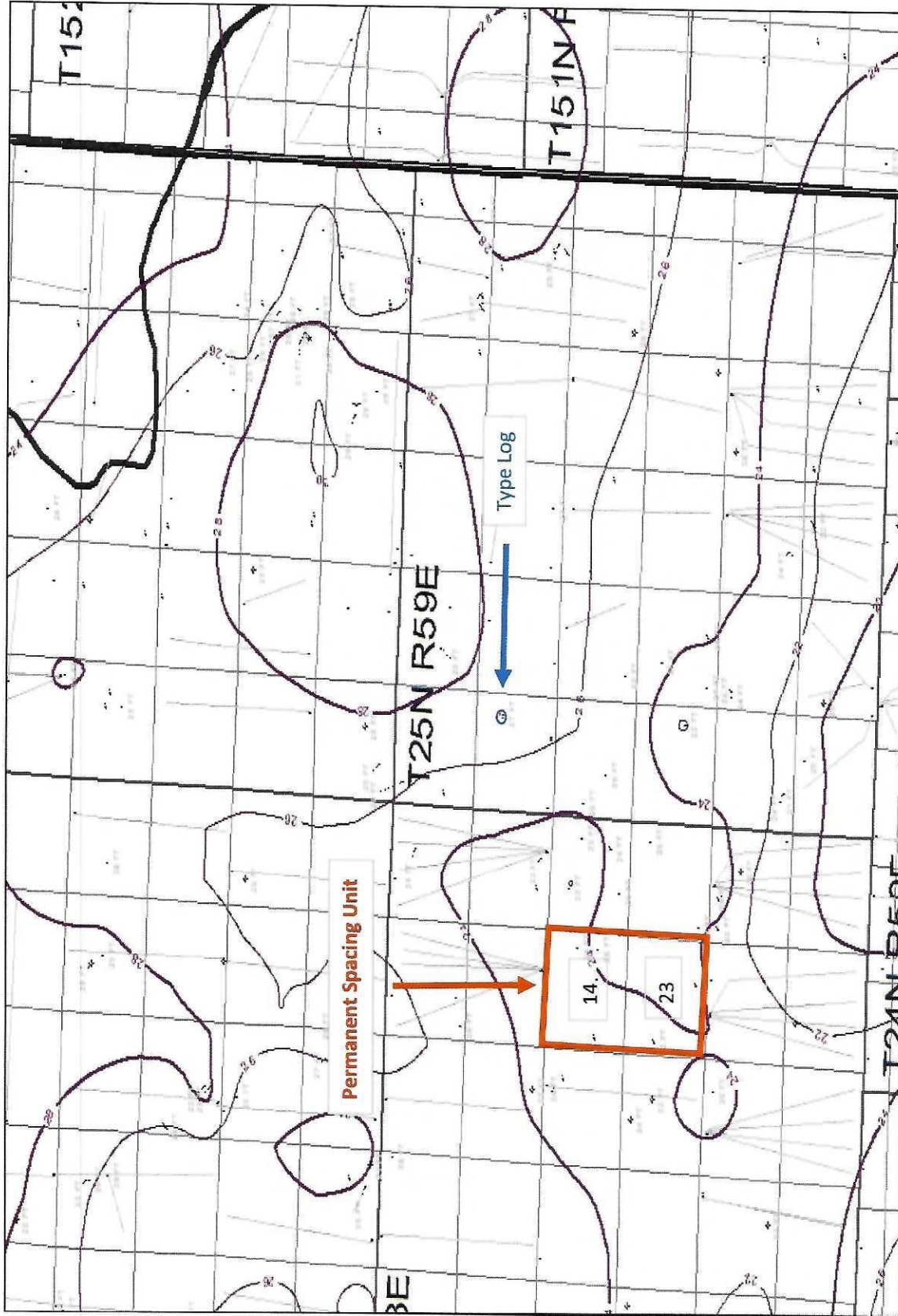
Rodger Christiansen  
Richard J. Christiansen  
Donna L. Umback  
Diane Miller  
Maryann Danielson  
Alma L. Christiansen  
Dean A. Jacobson Res. Trust  
Viola L. Jacobson  
Debra D. Hollister  
Jana L. Clinton  
Michael G. Miller  
Jennifer D. Powers  
Stefani M. Powers  
Jeffrey D. Powers  
Florida Exploration Company  
Sonora Petroleum Corp.

**Working Interest**

Arnold Greenberg  
Cow Gulch Oil Company  
East End Energy, Inc.  
Basin Acquisition Fund  
Kraken Oil & Gas, LLC  
Mark Gatof  
Monkota Petroleum Corp.  
Robert L. Segal  
Segal Oil & Gas, Inc.  
TCG Limited Partnership



**Top of Upper Bakken Shale Structure**  
 T25N-R58E, Sections 14 & 23  
 Richland County, Montana

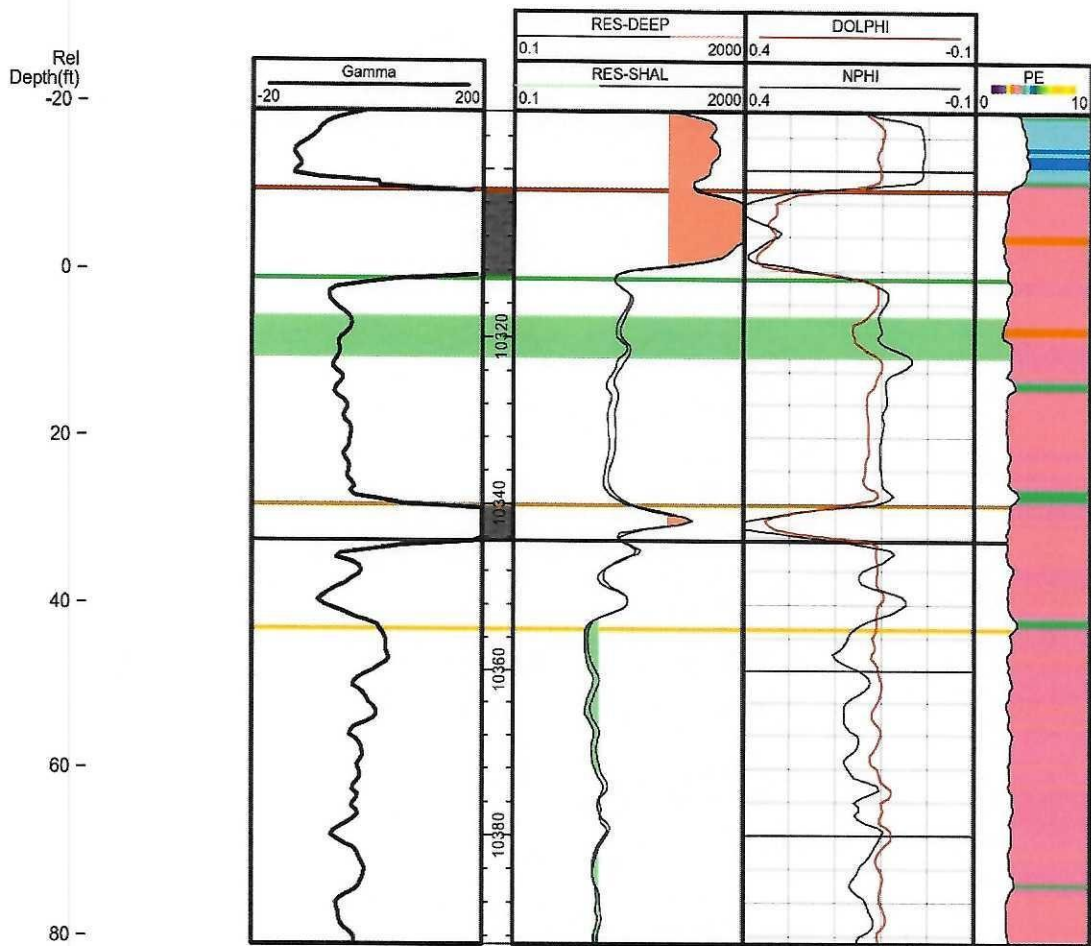


Middle Bakken Gross Isopach  
T25N-R58E- Sections 14 & 23  
Richland County, Montana



250832166100

SANNES RONALD M  
DOYLE #H-7  
RICHLAND  
T25N R59E S7



Type Log - Bakken Section  
Permanent Spacing Unit  
T25N-R58E-Sections 14 & 23  
Richland County, Montana



Kraken Oil & Gas, LLC

Taylor 14-23 #2H

Section 11, Township 25N Range 58E SESW 420' FSL x 2,053' FWL  
Middle Bakken  
Elm Coulee, NE in Richland County, Montana  
25-083-23369



ELEV. 2,162' GL  
RIG = 26'

WELLBORE SCHEMATIC

1/26/2021

Component	Jts	Size	Wght	Grade	Conn	Length	Top	Btm
KB						20		20
Tubing Sub	2	2.875"	6.5	L80	EUE	10.07	26	36
Tubing	277	2.875"	0.5	L80	EUE	9171.00	36	9208
Enduroloy Tubing	4	2.875"	6.5	J55	EUE	130.1	9,208	9,338
MSSGN	1	2.875"		Stainless	EUE	0.8	9,338	9,339
Bolt on Discharge	1	2.875"		Stainless	EUE/Bolt On	0.8	9,339	9,340
Pump	1	4.000"			Bolt On	13.4	9,340	9,353
Pumps	3	4.000"			Bolt On	66	9,353	9,419
AGH	1	4.000"			Bolt On	6.3	9,419	9,425
V. Pump	1	4.000"			Bolt On	21.28	9,425	9,447
Intake/Gas Sep	2	4.000"			Bolt On	6.3	9,447	9,453
Seals	2	4.000"			Bolt On	16.08	9,453	9,469
Motor	1	4.56"			Bolt On	31.5	9,469	9,500
Sensor	1	4.56"			Bolt On/EUE	1.87	9,500	9,502
Centralizer	1	5.500"			EUE	2.15	9,502	9,505
Space to packer						40.54	9,505	9,545
7" ASI-X Packer	1	5.875"			EUE	7.8	9,545	9,553
Burst Disc Sub	1	3.460"			EUE	0.8	9,553	9,554
2.778 x 3.5" XO	1	3.500"			EUE	0.53	9,554	9,554
3.5" Cavins Desander	1	3.500"			EUE	2.95	9,554	9,557
3.5" Handling Sub	1	3.500"	9.3	L80	EUE	6.18	9,557	9,563
3.5" x 4.5" XO	1	4.500"			EUE/LTC	0.45	9,563	9,564
4.5" Bull Plug w/ HoGo	0	4.500"	11.0	P110	LTC	316.12	9,564	9,882
4.5" Bull Plug w/ HoGo	1	5.750"			LTC	0.97	9,882	9,883

**Conductor**  
16" 34.00#, J-55  
Set @ 60' MD  
20" hole  
Cemented to surface

**Surface Casing**  
9.58" 36# J-55 LTC  
Float Collar  
9.58" 36# J-55 LTC  
9.58" 36# J-55 LTC  
Float/Guide Shoe

**Intermediate Casing**  
7" 32# P-110 BTC  
Float Collar  
7" 32# P-110 BTC  
7" Float/Guide Shoe

Top Bottom  
26.00' 10,740.31'  
2,161.75' 10,741.43'  
2,162.65' 10,780.48'  
2,203.73' 10,781.98'  
2,203.18'

**Liner**  
Top of PBR at  
Packer  
Hanger  
4-1/2", 13.5#, HCP-110, DWCC  
4-1/2", 13.5#, HCP-110, BTC

Top Bottom  
9,916.90' 9,931.90'  
9,931.90' 9,933.22'  
9,933.22' 9,948.53'  
9,948.53' 10,859.37'  
10,859.37' 20,787.00'

Description	Length	Top Depth, RKB	Btm Depth, RKB
15" PBR w/ LTY Packer	15.00	9,916.90	9,931.90
New Energy Liner Top Packer	1.32	9,931.90	9,933.22
New Energy Liner Top Hanger Plug Jt	15.31	9,933.22	9,948.53
4-1/2", 13.5#, P-110, DWCC Casing	41.98	9,948.53	9,990.51
4-1/2", 13.5#, P-110, DWCC Casing	40.47	9,990.51	10,030.98
4-1/2", 13.5#, P-110, DWCC Casing	41.32	10,030.98	10,072.30
4-1/2", 13.5#, P-110, DWCC Casing	40.91	10,072.30	10,113.21
4-1/2", 13.5#, P-110, DWCC Casing	35.91	10,113.21	10,149.12
4-1/2", 13.5#, P-110, DWCC Casing	42.04	10,149.12	10,191.16
4-1/2", 13.5#, P-110, DWCC Casing	40.83	10,191.16	10,231.99

TD = 20,802'  
TVD = 10,424'



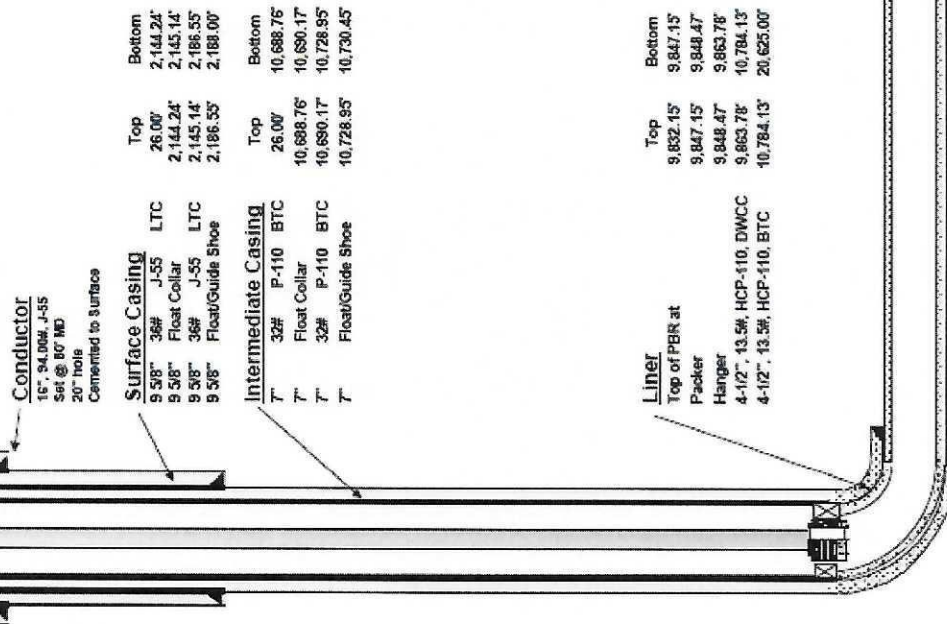
01.14.2020

JMP

Kraken Oil & Gas, LLC  
**Taylor 14-23 #3H**  
 Section 11, Township 25N Range 58E SESW 420' FSL x 2,086' FWL  
 Middle Bakken  
 Elm Coulee, NE in Richland County, Montana  
 25-083-23370

**WELLBORE SCHEMATIC**

ELEV. 2,166' GL  
 RKB = 26'



Typical BHA and Tubing Design for Production Thg		
Tog Hanger	BO-2 Coupling and Wrap-Around	Canary
Pup Joints	2-7/8", 6.5#, L-80, EUE	As Needed
Tog to surface	2-7/8", 6.5#, L-80, EUE	Full Length
X Profile Nipple	2-3/13" ID BY 2-7/8", EUE	L-80
1 Joint of Tog	2-7/8", 6.5#, L-80, EUE	Full Length
Crossover	2-7/8" EUE to 2-3/8" EUE	L-80
4 Joints of Tog	2-3/8", 4.7#, L-80, EUE	Full Length
Overshot	F-2 On/Off Tool for 4-1/2", 13.5# Casing	
Slinger	2-3/8", Slinger w/1.870" X Nipple Profile	
Packer	3.97" Arrowset AS-1X Packer for 4-1/2", 13.5# Csg	
Pup Joint	2-3/8", 4.7#, L-80, EUE	4 to 6 ft
Pump Out Plug	2-3/8", EUE Nipple w/2.00" POP w/3 pins for ~1,600 psi	

Run by Workover Rig		
Overshot		
Slinger		
Packer		
Pup Joint		
Pump Out Plug		

Run by Wireline		
Overshot		
Slinger		
Packer		
Pup Joint		
Pump Out Plug		

Description	Length	Top Depth, RKB	Btm Depth, RKB
15 ft PBR with LT Packer	15.00	8,832.15	8,847.15
Nine Energy Liner Top Packer	1.32	8,847.15	8,848.47
Nine Energy Liner Top Hanger/Pup Jt	15.31	8,848.47	8,863.78
4-1/2", 13.5#, P-110, DWCC Casing	41.18	8,863.78	8,904.87
4-1/2", 13.5#, P-110, DWCC Casing	41.18	8,904.87	8,946.15
4-1/2", 13.5#, P-110, DWCC Casing	41.18	8,946.15	8,987.31
4-1/2", 13.5#, P-110, DWCC Casing	41.80	8,987.31	10,029.21
4-1/2", 13.5#, P-110, DWCC Casing	41.80	10,029.21	10,071.01
4-1/2", 13.5#, P-110, DWCC Casing	41.88	10,071.01	10,112.89
4-1/2", 13.5#, P-110, DWCC Casing	42.25	10,112.89	10,155.14

TD = 20,636'  
 TVD = 10,388'



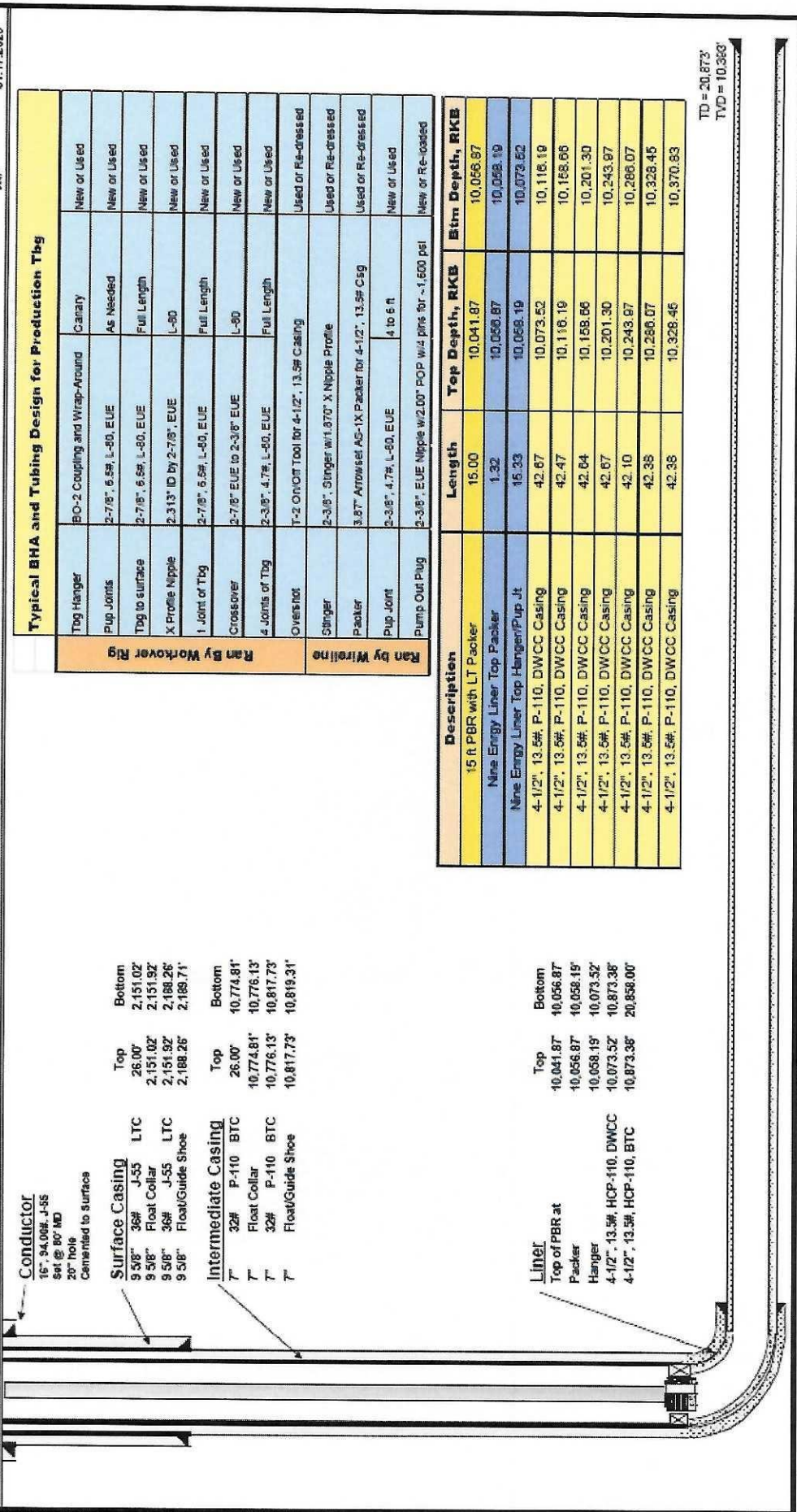
Kraken Oil & Gas, LLC  
**Taylor 14-23 #4H**  
 Section 11, Township 25N Range 58E SE SW 420' FSL x 2,119' FWL  
 Middle Bakken  
 Elm Coulee, NE in Richland County, Montana  
 25-083-23371

01.17.2020

JMP

ELEV. 2166' GL  
 RWD = 26'

**WELLBORE SCHEMATIC**



**Typical BHA and Tubing Design for Production Tub**

Tag Hanger	BO-2 Coupling and Wrap-Around	Canary	New or Used
Pup Joints	2-7/8", 6.5#, L-80, EUE	As Needed	New or Used
Tog to surface	2-7/8", 6.5#, L-80, EUE	Full Length	New or Used
X Profile Nipple	2.313" ID by 2-7/8", EUE	L-80	New or Used
1 Joint of Tog	2-7/8", 6.5#, L-80, EUE	Full Length	New or Used
Crossover	2-7/8" EUE to 2-3/8" EUE	L-80	New or Used
4 Joints of Tog	2-3/8", 4.7#, L-80, EUE	Full Length	New or Used
Overshot	T-2 OSHOT Tool for 4-1/2", 13.5# Casing		Used or Re-dressed
Slinger	2-3/8" Slinger w/1.870" X Nipple Profile		Used or Re-dressed
Packer	3.87" Ardwise AS-1X Packer for 4-1/2", 13.5# Csg		Used or Re-dressed
Pup Joint	2-3/8", 4.7#, L-80, EUE	4 to 6 ft	New or Used
Pump Out Plug	2-3/8" EUE Nipple w/2.00" POP w/4 pins for ~1,600 psi		New or Re-loaded

Description	Length	Top Depth, RKB	Btm Depth, RKB
15 ft PBR with LT Packer	15.00	10,041.87	10,056.87
Nine Energy Liner Top Packer	1.32	10,058.19	10,059.51
Nine Energy Liner Top Hanger/Pup Jt	15.33	10,073.52	10,073.52
4-1/2", 13.5# P-110, DWCC Casing	42.67	10,116.19	10,116.19
4-1/2", 13.5# P-110, DWCC Casing	42.47	10,158.66	10,158.66
4-1/2", 13.5# P-110, DWCC Casing	42.64	10,201.30	10,201.30
4-1/2", 13.5# P-110, DWCC Casing	42.67	10,243.97	10,243.97
4-1/2", 13.5# P-110, DWCC Casing	42.10	10,286.07	10,286.07
4-1/2", 13.5# P-110, DWCC Casing	42.85	10,328.45	10,328.45
4-1/2", 13.5# P-110, DWCC Casing	42.35	10,328.46	10,370.53

TD = 20,873'  
 TVD = 10,363'





01.17.2020

Kraken Oil & Gas, LLC  
**Taylor 14-23 #5H**  
 Section 11, Township 26N Range 58E SESW 420' FSL x 2,152' FWL  
 Middle Bakken  
 Elm Coulee, NE in Richland County, Montana  
 25-083-23372

**WELLBORE SCHEMATIC**

ELEV. 2,166' GL  
 RKB = 26'

**Conductor**  
 16" 34.00# J-55  
 361 @ 80' MD  
 Cemented to surface

**Surface Casing**  
 9 5/8" 36# J-55 LTC  
 9 5/8" Float Collar  
 9 5/8" 36# J-55 LTC  
 9 5/8" Float/Guide Shoe

**Intermediate Casing**  
 7" 32# P-110 BTC  
 7" Float Collar  
 7" 32# P-110 BTC  
 7" Float/Guide Shoe

**Liner**  
 Top of PBR at  
 Packer  
 Hanger  
 4-1/2", 13.5#, HCP-110, DWCC  
 4-1/2", 13.5#, HCP-110, BTC

Top Bottom  
 26.00' 2,144.02'  
 2,144.02' 2,144.32'  
 2,144.32' 2,186.07'  
 2,186.07' 2,187.52'

Top Bottom  
 26.00' 10,848.22'  
 10,848.22' 10,849.54'  
 10,849.54' 10,890.24'  
 10,890.24' 10,981.82'

Top Bottom  
 10,101.17' 10,116.17'  
 10,116.17' 10,117.49'  
 10,117.49' 10,132.86'  
 10,132.86' 11,051.26'  
 11,051.26' 21,070.00'

**Typical BHA and Tubing Design for Production Tbg**

Item	Specs	Canary	New or Used
Tag Hanger	BO-2 Coupling and Wrap-Around	Canary	New or Used
Pup Joints	2-7/8", 6.5#, L-90, EUE	As Needed	New or Used
Tag to surface	2-7/8", 6.5#, L-90, EUE	Full Length	New or Used
X Profile Nipple	2.313" ID by 2-7/8", EUE	L-90	New or Used
1 Joint of Tbg	2-7/8", 6.5#, L-90, EUE	Full Length	New or Used
Crossover	2-7/8" EUE to 2-3/8" EUE	L-90	New or Used
4 Joints of Tbg	2-3/8", 4.7#, L-90, EUE	Full Length	New or Used
Overshot	T-2 On/Off Tool for 4-1/2", 13.5# Casing		Used or Re-dressed
Stinger	2-3/8", Stinger w/1.670" X Nipple Profile		Used or Re-dressed
Packer	3.87" Arrowset AS-1X packer for 4-1/2", 13.5# Csg		Used or Re-dressed
Pup Joint	2-3/8", 4.7#, L-90, EUE	4 to 6 ft	New or Used
Pump Out Plug	2-3/8", EUE Nipple w/2.00" POP w/4 pins for ~1,650 psi		New or Re-loaded

Description	Length	Top Depth, RKB	Btm Depth, RKB
15 # PBR with LT Packer	15.00	10,101.17	10,116.17
Nine Energy Liner Top Packer	1.32	10,116.17	10,117.49
Nine Energy Liner Top Hanger/Pup Jt	15.37	10,117.49	10,132.86
4-1/2", 13.5#, P-110, DWCC Casing	41.86	10,132.86	10,174.72
4-1/2", 13.5#, P-110, DWCC Casing	41.84	10,174.72	10,216.56
4-1/2", 13.5#, P-110, DWCC Casing	41.81	10,216.56	10,258.37
4-1/2", 13.5#, P-110, DWCC Casing	41.82	10,258.37	10,300.19
4-1/2", 13.5#, P-110, DWCC Casing	41.86	10,300.19	10,342.05
4-1/2", 13.5#, P-110, DWCC Casing	41.86	10,342.05	10,383.91
4-1/2", 13.5#, P-110, DWCC Casing	41.88	10,383.91	10,425.79

TD = 21,050'  
 TVD = 10,390'



**LEGEND:**

- = PROPOSED WELLHEAD.
- = TARGET BOTTOM HOLE.
- ▲ = SECTION CORNERS LOCATED.

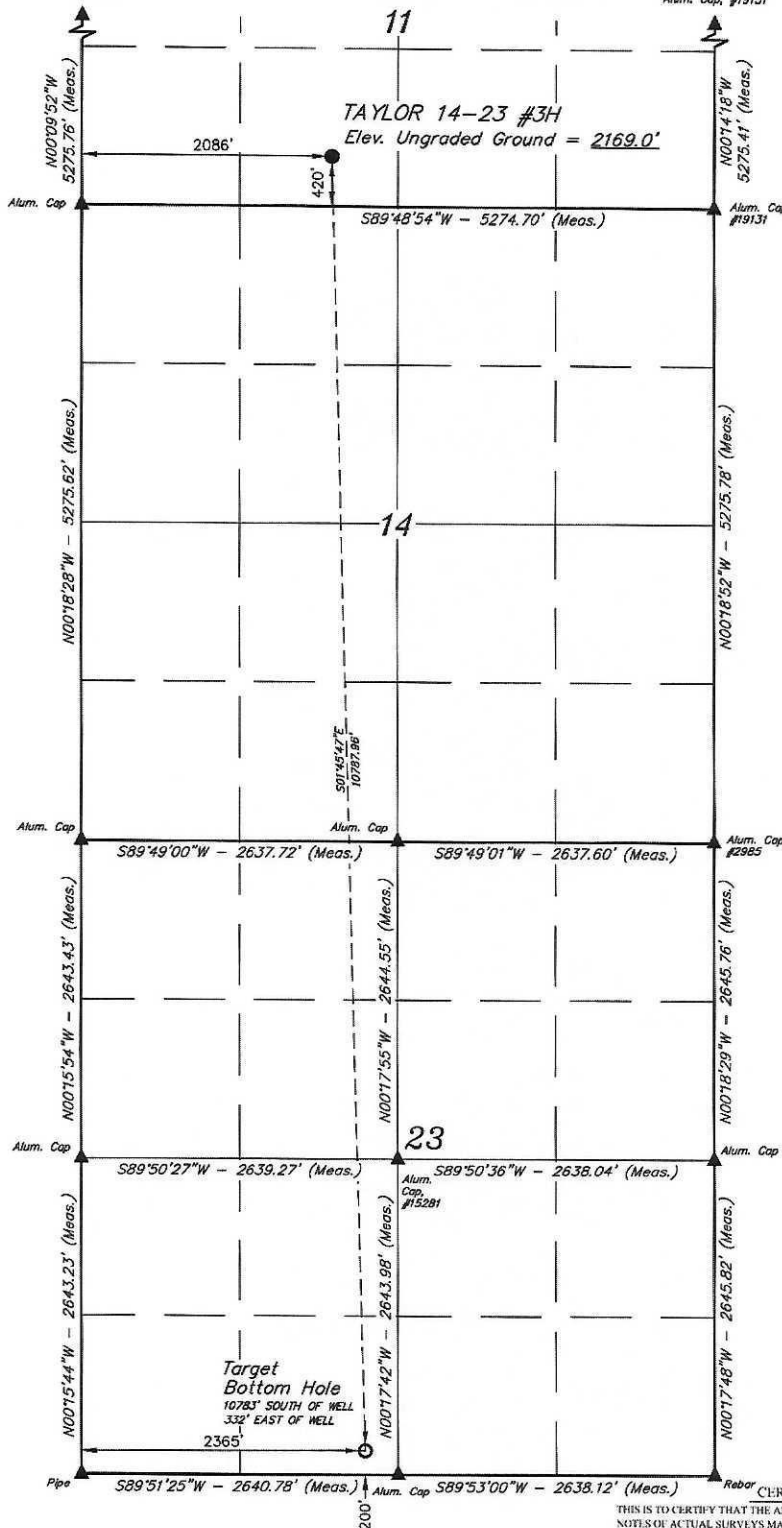
NW Cor. Sec. 11,  
Alum. Cap. #15061

T25N, R58E, P.M.M.

NE Cor. Sec. 11,  
Alum. Cap. #19131

NOTE:  
Distances referenced on plat to  
section lines are perpendicular.

E-6  
Docket No. 9-2021  
Docket No. 10-2021



NAD 83 (SURFACE LOCATION)	NAD 83 (TARGET BOTTOM HOLE)
LATITUDE = 47°55'36.52" (47 926811)	LATITUDE = 47°53'50.11" (47 897252)
LONGITUDE = 104°11'41.68" (104 194911)	LONGITUDE = 104°11'37.44" (104 193732)
NAD 27 (SURFACE LOCATION)	NAD 27 (TARGET BOTTOM HOLE)
LATITUDE = 47°55'36.45" (47 926792)	LATITUDE = 47°53'50.04" (47 897234)
LONGITUDE = 104°11'39.90" (104 194416)	LONGITUDE = 104°11'55.65" (104 193237)

CERTIFICATE:  
THIS IS TO CERTIFY THAT THE ABOVE PLAT WAS PREPARED FROM FIELD NOTES OF ACTUAL SURVEYS MADE BY ME OR UNDER MY SUPERVISION AND THAT THE SAME ARE TRUE AND CORRECT TO THE BEST OF MY KNOWLEDGE AND BELIEF.

*Scott C. Kotarski*  
SCOTT C. KOTARSKI  
10801LS  
07-22-19  
LICENSED  
LAND SURVEYOR

REGISTERED LAND SURVEYOR  
REGISTRATION NO. 10801LS  
STATE OF MONTANA

REV: I 07-22-19 C.M.T. (BHL MOVE)

**BASIS OF BEARINGS**  
BASIS OF BEARINGS IS A G.P.S. OBSERVATION  
VERTICAL CONTROL DATUM: NAVD88



**UELS, LLC**  
Corporate Office \* 85 South 200 East  
Vernal, UT 84078 \* (435) 789-1017



**KRAKEN OPERATING, LLC**

TAYLOR 14-23 #3H  
SE 1/4 SW 1/4, SECTION 11, T25N, R58E, P.M.M.  
RICHLAND COUNTY, MONTANA

SURVEYED BY	J.J. T.R.	03-19-19	SCALE
DRAWN BY	S.C.S.	03-21-19	1" = 1000'

**WELL LOCATION PLAT**

**LEGEND:**

- = PROPOSED WELLHEAD.
- = TARGET BOTTOM HOLE.
- ▲ = SECTION CORNERS LOCATED.

NW Cor. Sec. 11,  
Alum. Cap. #15061

**T25N, R58E, P.M.M.**

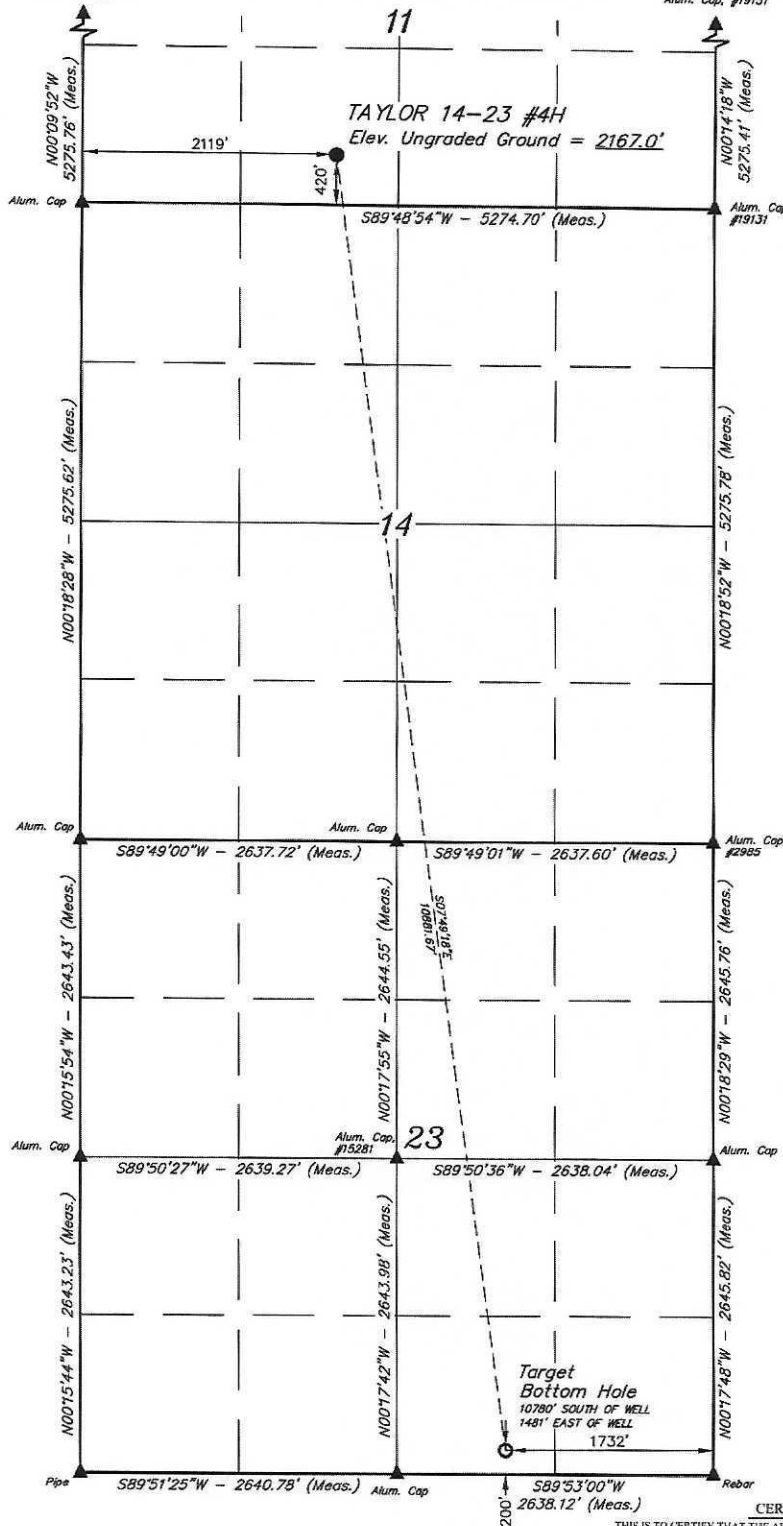
NE Cor. Sec. 11,  
Alum. Cap. #19131

**NOTE:**  
Distances referenced on plat to  
section lines are perpendicular.

E-7

Docket No. 9-2021

Docket No. 10-2021



NAD 83 (SURFACE LOCATION)	NAD 83 (TARGET BOTTOM HOLE)
LATITUDE = 47°53'36.52" (47.926811)	LATITUDE = 47°53'50.09" (47.897246)
LONGITUDE = 104°11'41.20" (104.194777)	LONGITUDE = 104°11'20.09" (104.188915)
NAD 27 (SURFACE LOCATION)	NAD 27 (TARGET BOTTOM HOLE)
LATITUDE = 47°59'36.45" (47.926792)	LATITUDE = 47°53'50.02" (47.897228)
LONGITUDE = 104°11'39.41" (104.194281)	LONGITUDE = 104°11'18.31" (104.188419)

**CERTIFICATE**

THIS IS TO CERTIFY THAT THE ABOVE PLAT WAS PREPARED FROM FIELD NOTES OF ACTUAL SURVEYS MADE BY ME OR UNDER MY SUPERVISION AND THAT THE SAME ARE TRUE AND CORRECT TO THE BEST OF MY KNOWLEDGE AND BELIEF.

*Scott C. Kistner*  
 SCOTT C. KISTNER  
 18801LS  
 07-22-19  
 LICENSED  
 LAND SURVEYOR

*Scott C. Kistner*  
 REGISTERED LAND SURVEYOR  
 REGISTRATION NO. 18801LS  
 STATE OF MONTANA

REV: I 07-22-19 C.M.T. (BHL MOVE)

**BASIS OF BEARINGS**  
 BASIS OF BEARINGS IS A G.P.S. OBSERVATION  
 VERTICAL CONTROL DATUM: NAVD88



**UELS, LLC**  
 Corporate Office \* 85 South 200 East  
 Vernal, UT 84078 \* (435) 789-1017



**KRAKEN OPERATING, LLC**

TAYLOR 14-23 #4H  
 SE 1/4 SW 1/4, SECTION 11, T25N, R58E, P.M.M.  
 RICHLAND COUNTY, MONTANA

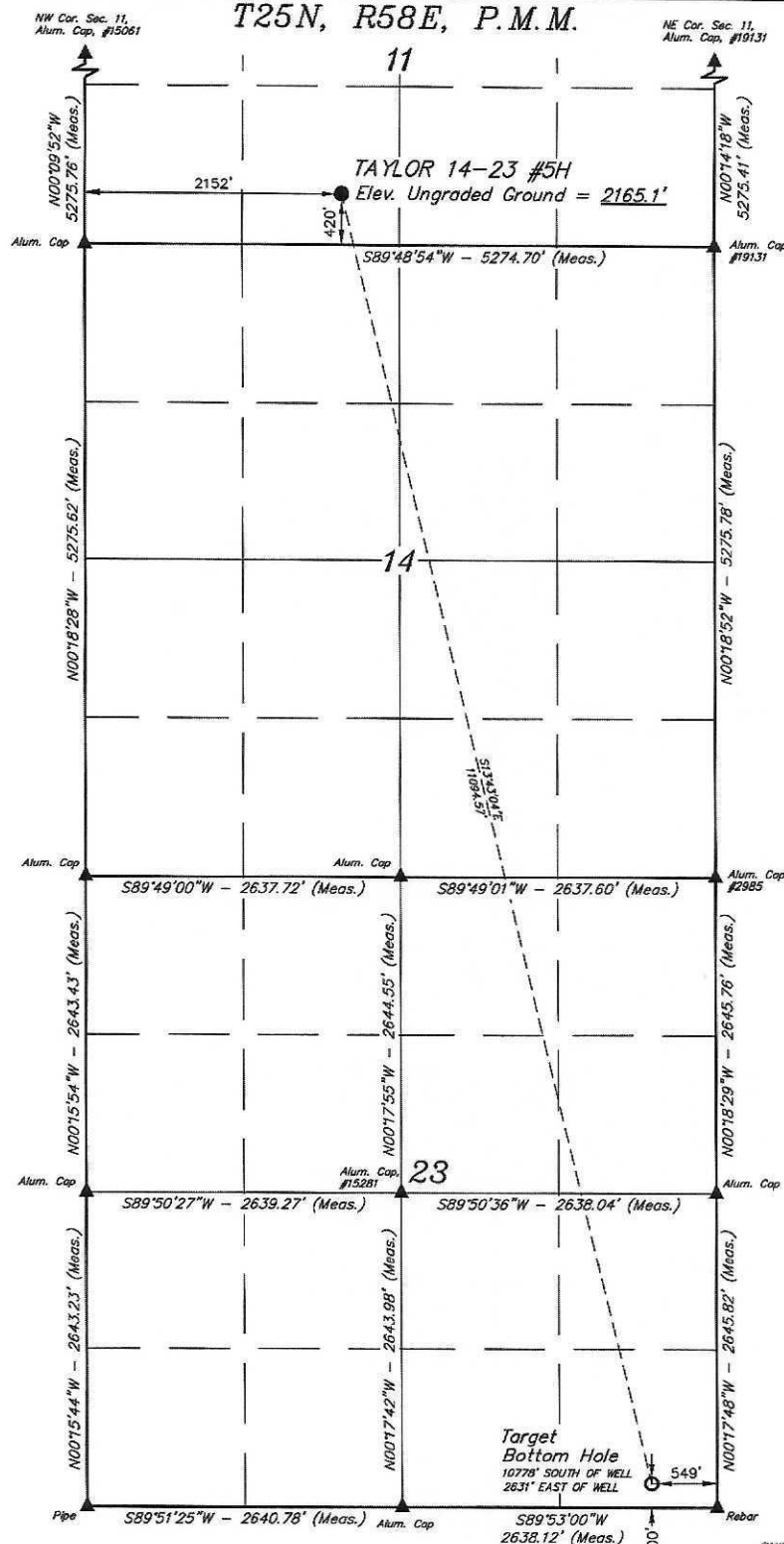
SURVEYED BY	J.J. T.R.	03-19-19	SCALE
DRAWN BY	S.C.S.	03-21-19	1" = 1000'

**WELL LOCATION PLAT**

**LEGEND:**

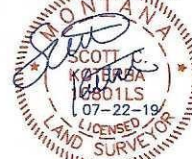
- = PROPOSED WELLHEAD.
- = TARGET BOTTOM HOLE.
- ▲ = SECTION CORNERS LOCATED.

NOTE:  
Distances referenced on plat to section lines are perpendicular.



NAD 83 (SURFACE LOCATION)	NAD 83 (TARGET BOTTOM HOLE)
LATITUDE = 47°55'36.52" (47.926811)	LATITUDE = 47°53'50.06" (47.897240)
LONGITUDE = 104°11'40.71" (104.194642)	LONGITUDE = 104°11'02.73" (104.184092)
NAD 27 (SURFACE LOCATION)	NAD 27 (TARGET BOTTOM HOLE)
LATITUDE = 47°55'36.45" (47.926792)	LATITUDE = 47°53'50.00" (47.897221)
LONGITUDE = 104°11'38.93" (104.19447)	LONGITUDE = 104°11'00.95" (104.183598)

**CERTIFICATE**  
THIS IS TO CERTIFY THAT THE ABOVE PLAT WAS PREPARED FROM FIELD NOTES OF ACTUAL SURVEYS MADE BY ME OR UNDER MY SUPERVISION AND THAT THE SAME ARE TRUE AND CORRECT TO THE BEST OF MY KNOWLEDGE AND BELIEF.



*Scott C. Kuntze*  
REGISTERED LAND SURVEYOR  
REGISTRATION NO. 10801LS  
STATE OF MONTANA

**BASIS OF BEARINGS**  
BASIS OF BEARINGS IS A G.P.S. OBSERVATION  
VERTICAL CONTROL DATUM: NAVD88

**UELS, LLC**  
Corporate Office \* 85 South 200 East  
Vernal, UT 84078 \* (435) 789-1017



**KRAKEN OPERATING, LLC**

TAYLOR 14-23 #5H  
SE 1/4 SW 1/4, SECTION 11, T25N, R58E, P.M.M.  
RICHLAND COUNTY, MONTANA

SURVEYED BY	J.J., T.R.	03-19-19	SCALE
DRAWN BY	C.M.T.	07-22-19	1" = 1000'

**WELL LOCATION PLAT**



**Kraken Operating LLC**  
**Permanent Spacing**  
**TAYLOR 14-23 #2H, #3H, #4H & #5H**  
**T25N R58E Sections 14 & 23**  
**Richland County, Montana**

**Reserves and Economic Analysis**

**Reservoir Properties**

Formation Type	Dolomitic Limestone
Vertical Thickness (ft)	38
Water Saturation	30%
Porosity	7%
Reservoir Temperature (deg F)	220
Oil Gravity (deg API)	42
Gas Gravity	0.95
GOR (SCF/STB)	1,000
Oil Formation Volume Factor	1.4 RB/STB

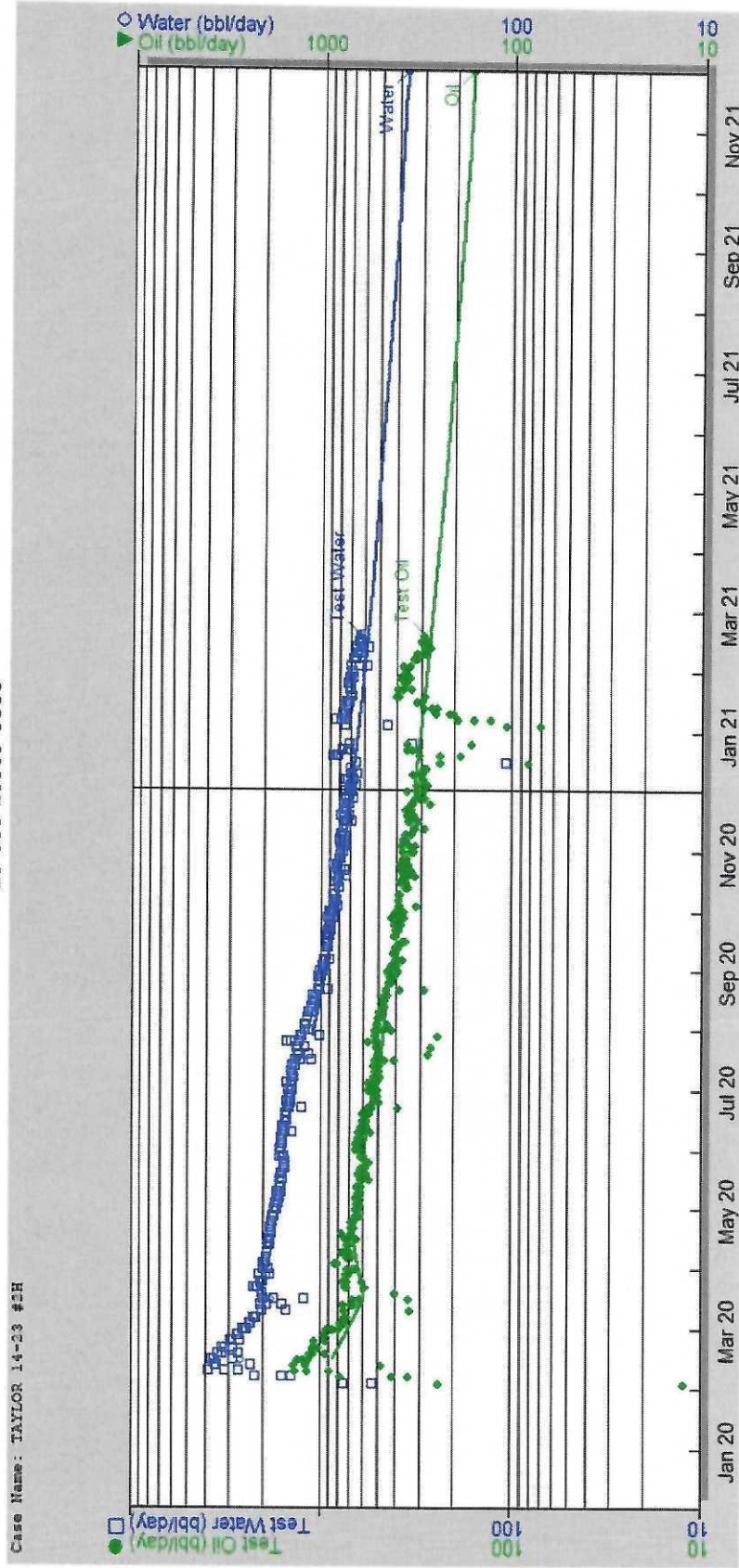
**OOIP and Recovery**

Spacing Unit Size (Ac)	1,280
OOIP (bbl/sec)	7,600,000
EUR - Decline Curve Analysis (bbl)	660,000
Oil Recovery Factor	4.3%

**Economics**

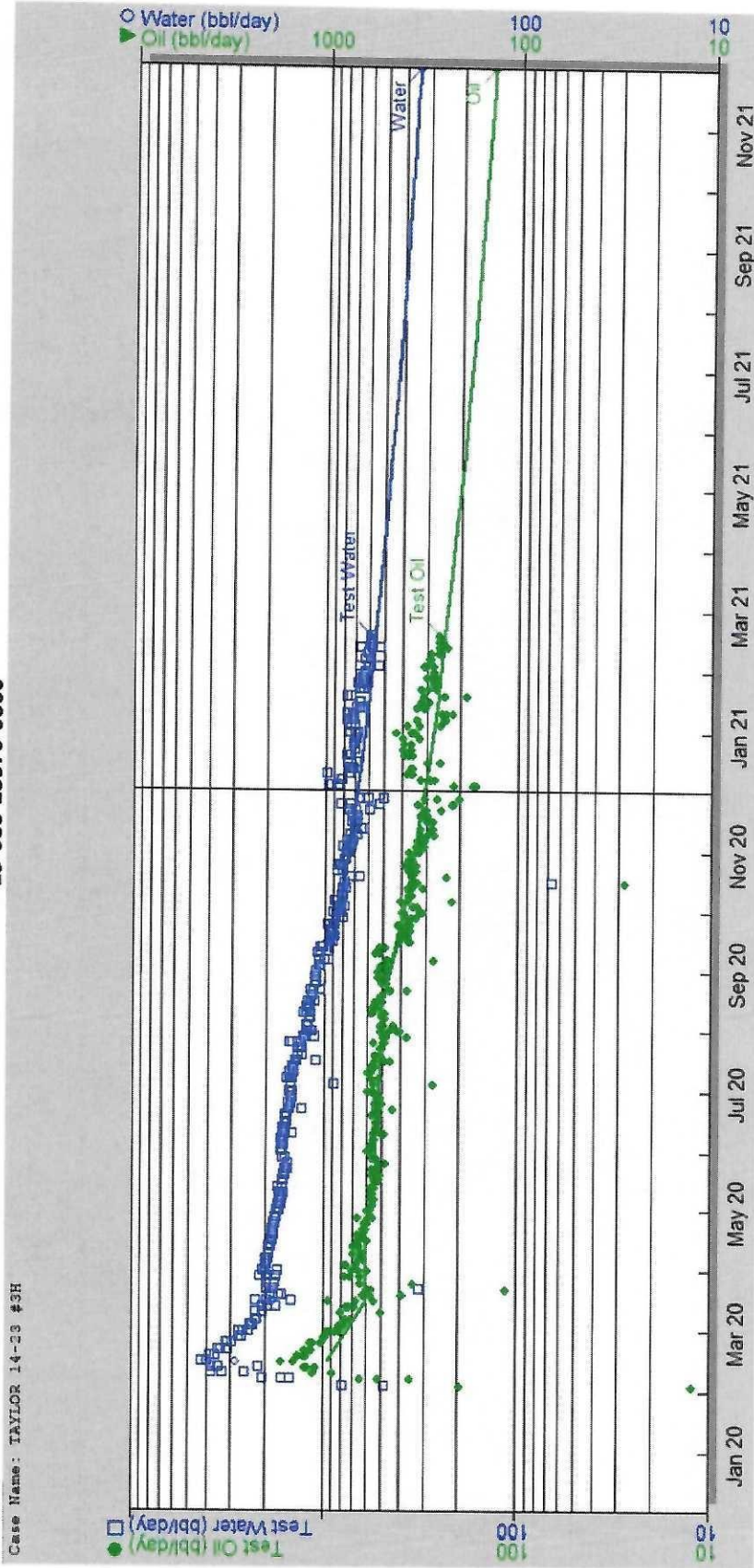
Product Pricing	3/17/2021 NYMEX Strip
Working Interest	100.00%
Net Revenue Interest	80.00%
Net Sales (M)	\$ 30,875
Operating Expense (M)	\$ 5,769
Severance Tax (M)	\$ 1,732
Net Income (M)	\$ 23,374
Net Investment (M)	\$ 6,771
Undiscounted Net/Investment	3.45

Kraken Operating LLC  
Production Profile  
TAYLOR 14-23 #2H  
T25N R58E Sections 14 & 23  
Richland County, Montana  
25-083-23369-0000



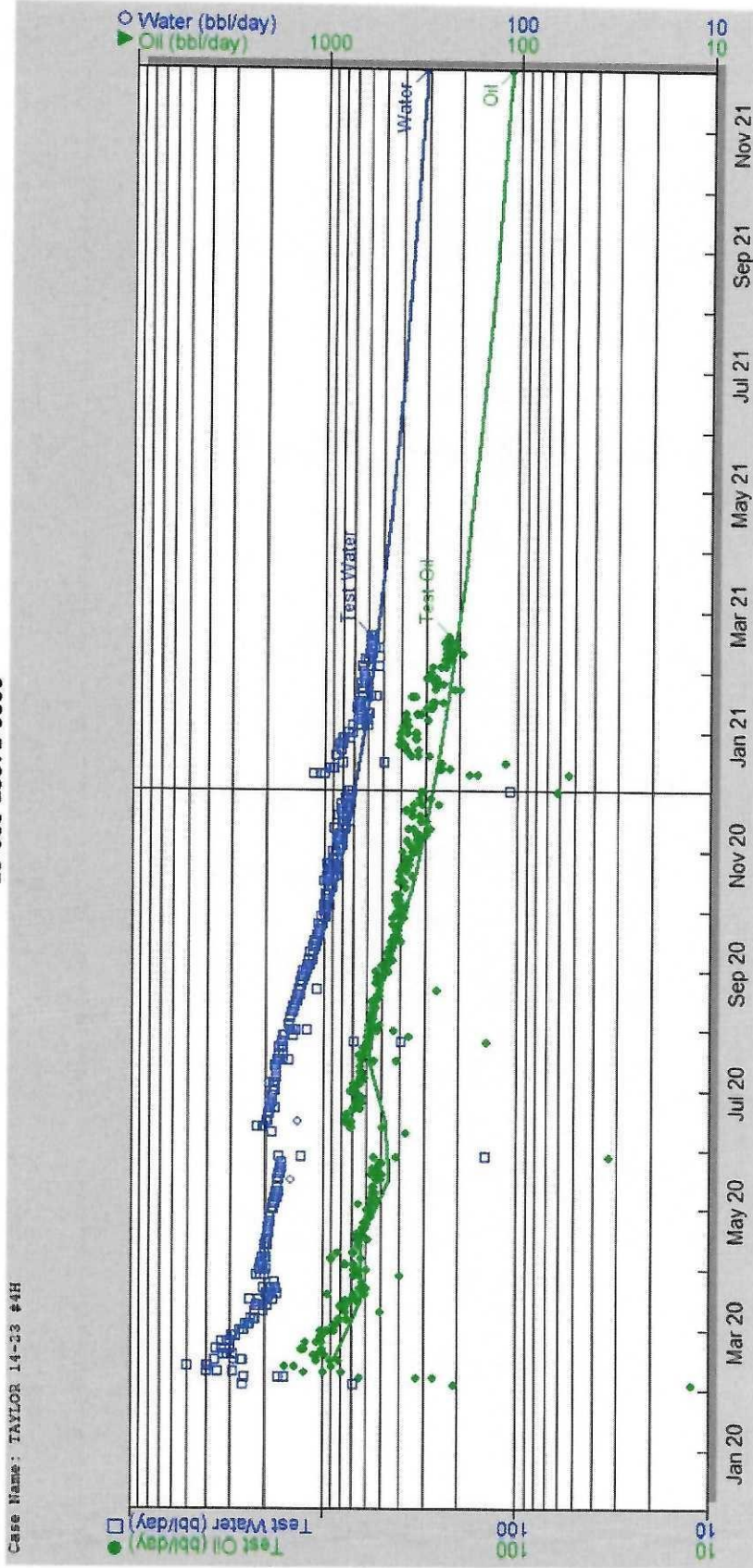
Kraken Operating LLC  
Production Profile  
TAYLOR 14-23 #3H

T25N R58E Sections 14 & 23  
Richland County, Montana  
25-083-23370-0000





Kraken Operating LLC  
 Production Profile  
 TAYLOR 14-23 #4H  
 T25N R58E Sections 14 & 23  
 Richland County, Montana  
 25-083-23371-0000



Kraken Operating LLC  
 Production Profile  
 TAYLOR 14-23 #5H  
 T25N R58E Sections 14 & 23  
 Richland County, Montana  
 25-083-23372-0000

